



Fast start, fast analysis, and that's it!

Beyond the limits with multi EA[®] 5000 analyzer. Fast. Automatic. Down till nano range.

Fast start: multi EA[®] 5000 – Experience fast measurements beyond the limits.

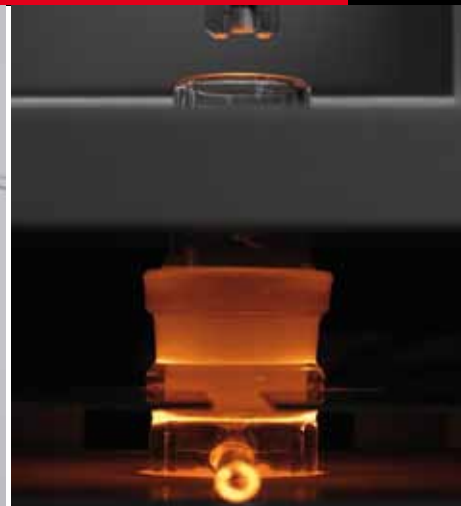
- **Preinstalled method library:** Easiest use due to ready-to-use, ASTM compliant analysis methods for each application request
- **multiWin[®] operation software:** Intuitive user guidance step by step, self explanatory menu contents, trouble-shooting assistant
- **Plug and start:** Automatic recognition and conditioning of all present components, no adjustment by user required

Fast analysis: multi EA[®] 5000 – Work with automatic, safe analysis beyond the limits.

- **Wide-range detection units:** No adjustment of optics, unique broad operation range – from ppb to wt-% – allows to mix samples with different concentrations in one cycle
- **Lowest detection limits:** Unique sensitivity in ultra-trace range, reliable, fast determination
- **Double furnace technology:** Matrix-optimized sample digestion
- **Flame sensor technology:** No time consuming method development, trouble-free digestion of each sample matrix and quantity
- **Multi-matrix sampling systems:** Highest sample throughput, fully automatic sample introduction systems for solids, liquids, gases and LPG samples
- **Multi-element analysis:** Analyze four elements – N/S/C/Cl – in one analysis cycle without any hardware refitting

multi EA[®] 5000: Fast – Automatic – Reliable – Precise





Fast & reliable results – that’s it: multi EA® 5000 – let the analyzer work!

- **Self-Check-System (SCS):** For best unattended operation 24/7
- **High-performance gas box:** Soot-free combustion by automatic leak check ensures minimized maintenance effort and down-time
- **Low maintenance costs**



Go beyond the limits: additional environmental application possibilities

multi EA® 5000 enables the determination of important environmental parameters (TOC in waste water/AOX/TOX, EOX in water, oil and sludge).



multi EA® 5000 – a universal application talent in petrochemistry

- Determination of chlorine traces in diesel fuel
- Determination of chlorine or nitrogen in kerosene, jet fuel and related matrices
- Determination of nitrogen in gasoline
- Determination of sulfur in diesel oil/heating oil
- Determination of sulfur in diesel fuel – comparative measurement in vertical and horizontal mode
- Determination of chlorine content in liquefied gases/LPG
- Determination of chlorine hydraulic fluids and related type matrices

A story of success: multi EA® in petrochemistry

Our international references are DOW, BASF, SGS, TOTAL, BP, Shell and many more.



Become part of the global EA community!

Analytik Jena AG
Konrad-Zuse-Str. 1
07745 Jena/Germany

phone: +49 (0) 36 41/77 70
fax: +49 (0) 36 41/77 92 79

info@analytik-jena.com
www.analytik-jena.com



Design and scope of supply as well as technical specifications are subject to modification!

